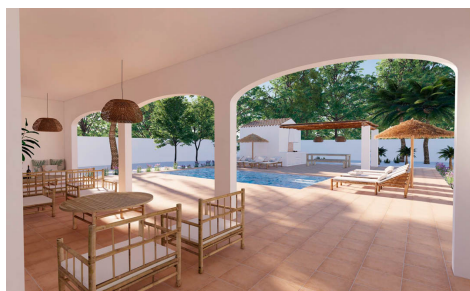


PROJECT

SLV15-5890C

Villa in Moraira

€ 1,449,000



4



5



589m²

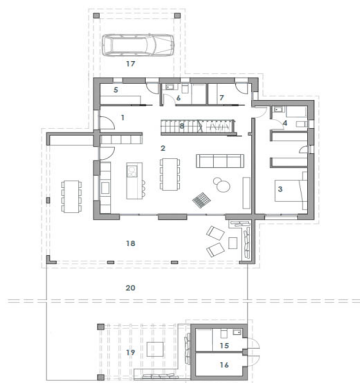
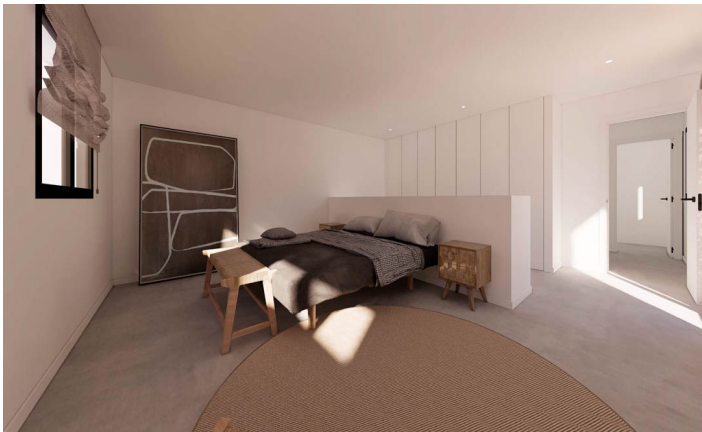


1,050m²

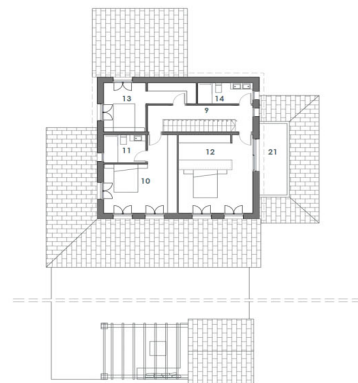


N/A

This beautiful traditional style villa project with a more modern Ibiza style interior is situated in a beautiful new development with lots of pine trees, very quiet and only a few minutes walk from Moraira's sandy beach with cosy terraces, very nice restaurants, nice shopping streets and car free village squares with large trees providing the necessary shade in the summer. Moraira also ...(Ask for More Details!)



| planta baja | |
|-----------------------|------------------|
| superficies útiles | |
| 01 VESTIBULO | 13,73 M2 |
| 02 SALÓN COMEDOR | 52,36 M2 |
| 03 COCINA | 17,67 M2 |
| 04 DORMITORIO 01 | 3,96 M2 |
| 05 ALMACÉN | 5,55 M2 |
| 06 BAÑO 01 | 4,13 M2 |
| 07 LAVADERO | 4,03 M2 |
| 08 ESCALERA | 4,03 M2 |
| 09 DISTRIBUIDOR | 6,51 M2 |
| 10 DORMITORIO 02 | 16,63 M2 |
| 11 BAÑO 02 | 5,30 M2 |
| 12 DORMITORIO 03 | 24,03 M2 |
| 13 DORMITORIO 04 | 11,57 M2 |
| 14 BAÑO 04 | 5,18 M2 |
| 15 BAÑO 05 | 4,78 M2 |
| 16 ALMACÉN | 4,78 M2 |
| superficie construida | |
| VIVIENDA | 248,36 M2 |
| 17 PORCHE PARKING | 26,62 M2 |
| 18 PORCHE TERRAZA | 58,44 M2 |
| 19 PERGOLA | 23,00 M2 |
| 20 TERRAZA P1 | 121,47 M2 |
| 21 TERRAZA P1 | 6,92 M2 |
| RESERVA | 33,60 M2 |
| APARCAMIENTO | 68,64 M2 |
| total | 589,05 M2 |
| escala 1/150 | |



| planta primera | |
|-----------------------|------------------|
| superficies útiles | |
| 01 VESTIBULO | 13,73 M2 |
| 02 SALÓN COMEDOR | 52,36 M2 |
| 03 COCINA | 17,67 M2 |
| 04 DORMITORIO 01 | 3,96 M2 |
| 05 ALMACÉN | 5,55 M2 |
| 06 BAÑO 02 | 4,13 M2 |
| 07 LAVADERO | 4,03 M2 |
| 08 ESCALERA | 4,03 M2 |
| 09 DISTRIBUIDOR | 6,51 M2 |
| 10 DORMITORIO 02 | 16,63 M2 |
| 11 BAÑO 03 | 5,30 M2 |
| 12 DORMITORIO 03 | 24,03 M2 |
| 13 DORMITORIO 04 | 11,57 M2 |
| 14 BAÑO 04 | 5,18 M2 |
| 15 BAÑO 05 | 4,78 M2 |
| 16 ALMACÉN | 4,78 M2 |
| superficie construida | |
| VIVIENDA | 248,36 M2 |
| 17 PORCHE PARKING | 26,62 M2 |
| 18 PORCHE TERRAZA | 58,44 M2 |
| 19 PERGOLA | 23,00 M2 |
| 20 TERRAZA P1 | 121,47 M2 |
| 21 TERRAZA P1 | 6,92 M2 |
| RESERVA | 33,60 M2 |
| APARCAMIENTO | 68,64 M2 |
| total | 589,05 M2 |
| escala 1/150 | |